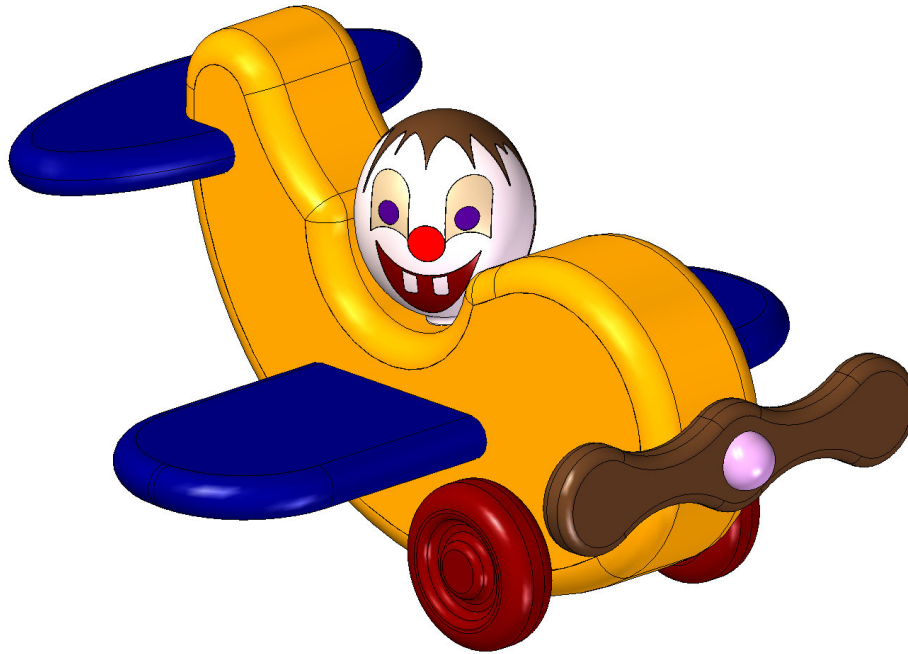


# FUNNY AIRPLANE



Playing games is an integral part of every person's life. The game is very important for growing up the child, because children fully concentrate to it, they have a great joy during the play and their approach to the game is free and spontaneous.

During the play, a child often uses some toy, which should fulfill a certain standards. It should be easy to use, have visual and aesthetic quality, be properly adjusted for the child's hand, have vivid colors and its construction should be easily understandable. In addition to that, every toy should be firm and well shaped, so the child could not hurt itself. Glues and paints should be stable, without smell and above all harmless substances. Toys designed for the younger kids should be larger and simpler, because small children have limited skills of toy manipulation. The composite toys are suitable for the older children. The most important quality of toy for any child's age is its well-planned function.

This wooden toy can be covered with lacquer or painted in any color. They are ecologically acceptable, give an impression of warmth and children are glad to play with them.

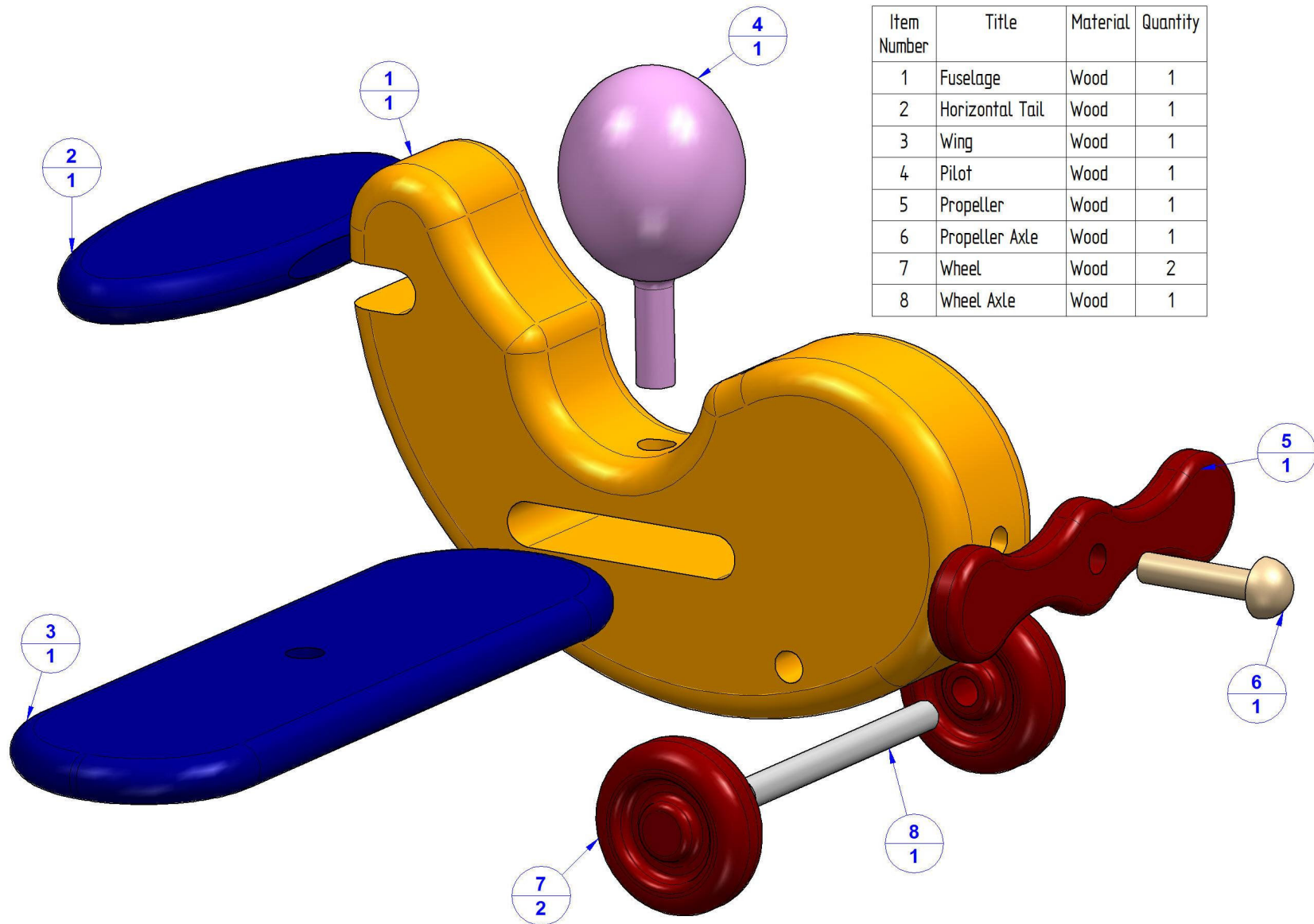
This is a plan for making a simple Funny Airplane toy for your child. The whole structure can be made at home for a relatively short time. You can use various types of wood, but we recommend birch, beech, maple or alder.

If you choose to protect the surface of your project with wood paint or lacquer, be careful to use only substances that are safe and harmless for your child.

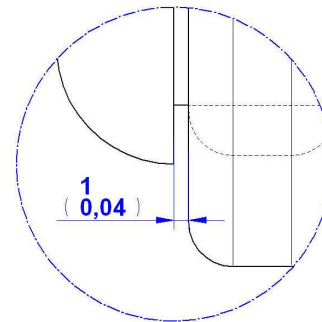
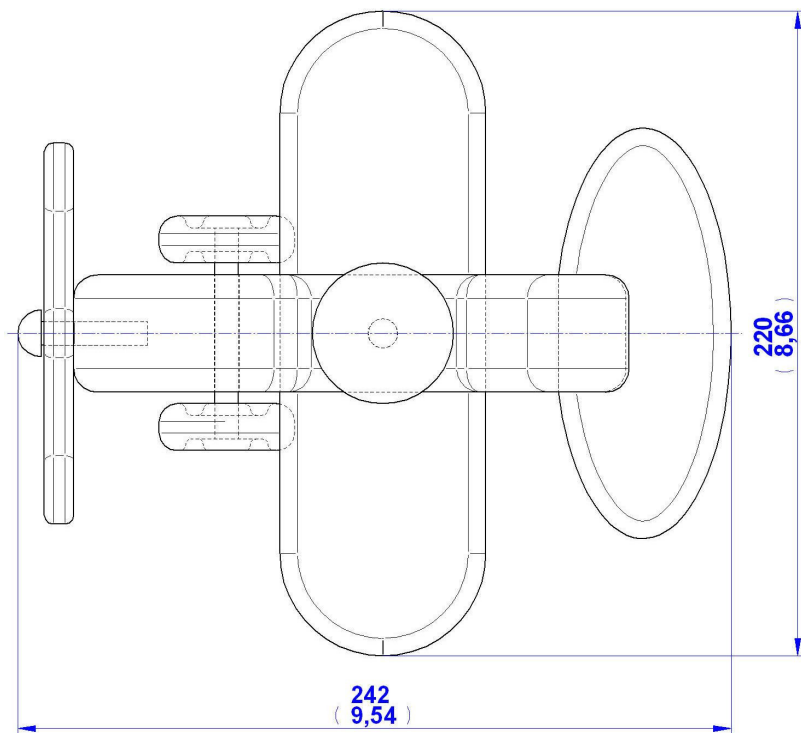
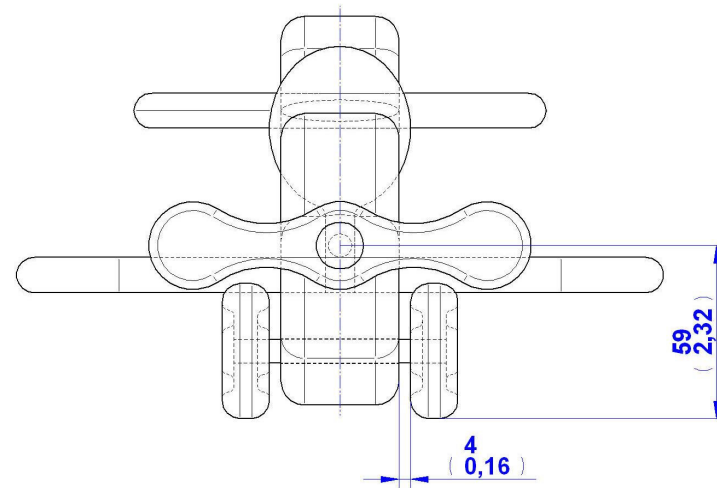
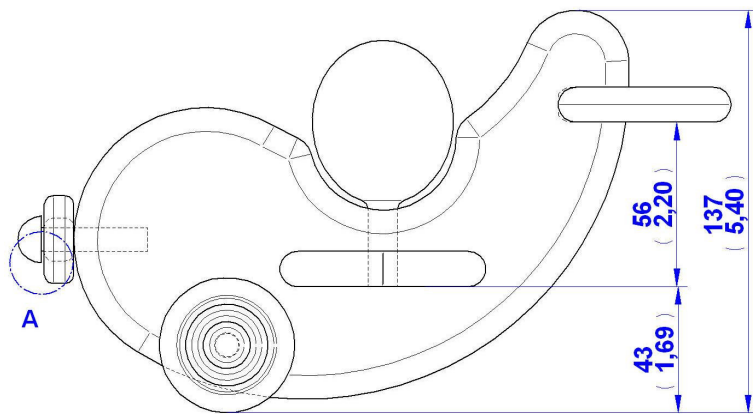
Carefully make the parts of the plane by the measurements given on particular pictures. The measurements are given in millimeters, while the measurements given in inches are in brackets (1 inch = 25,4 mm).

After making all the parts of the plane, you should join them with glue. Be careful with dosage of glue, because it could come out from the holes and smear the surface of an object.

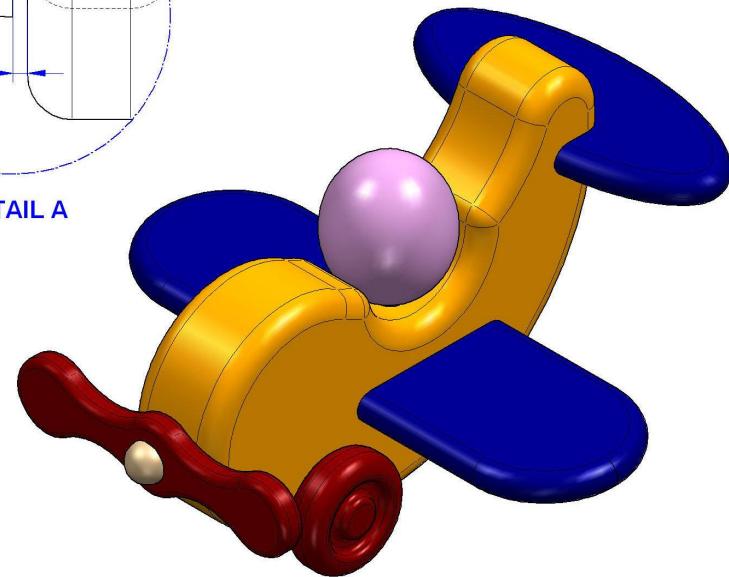
## PARTS LIST

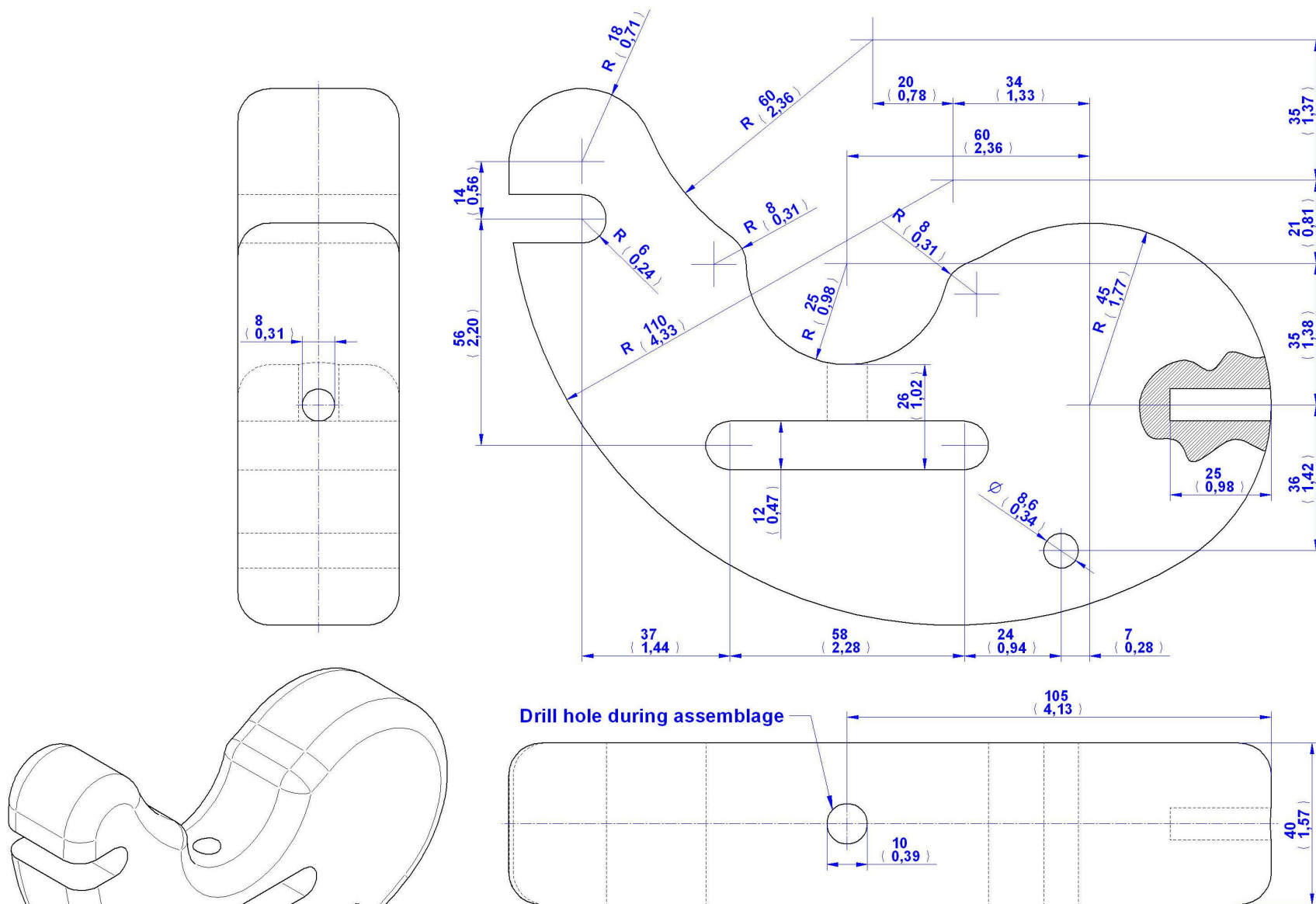


## 2D Documentation

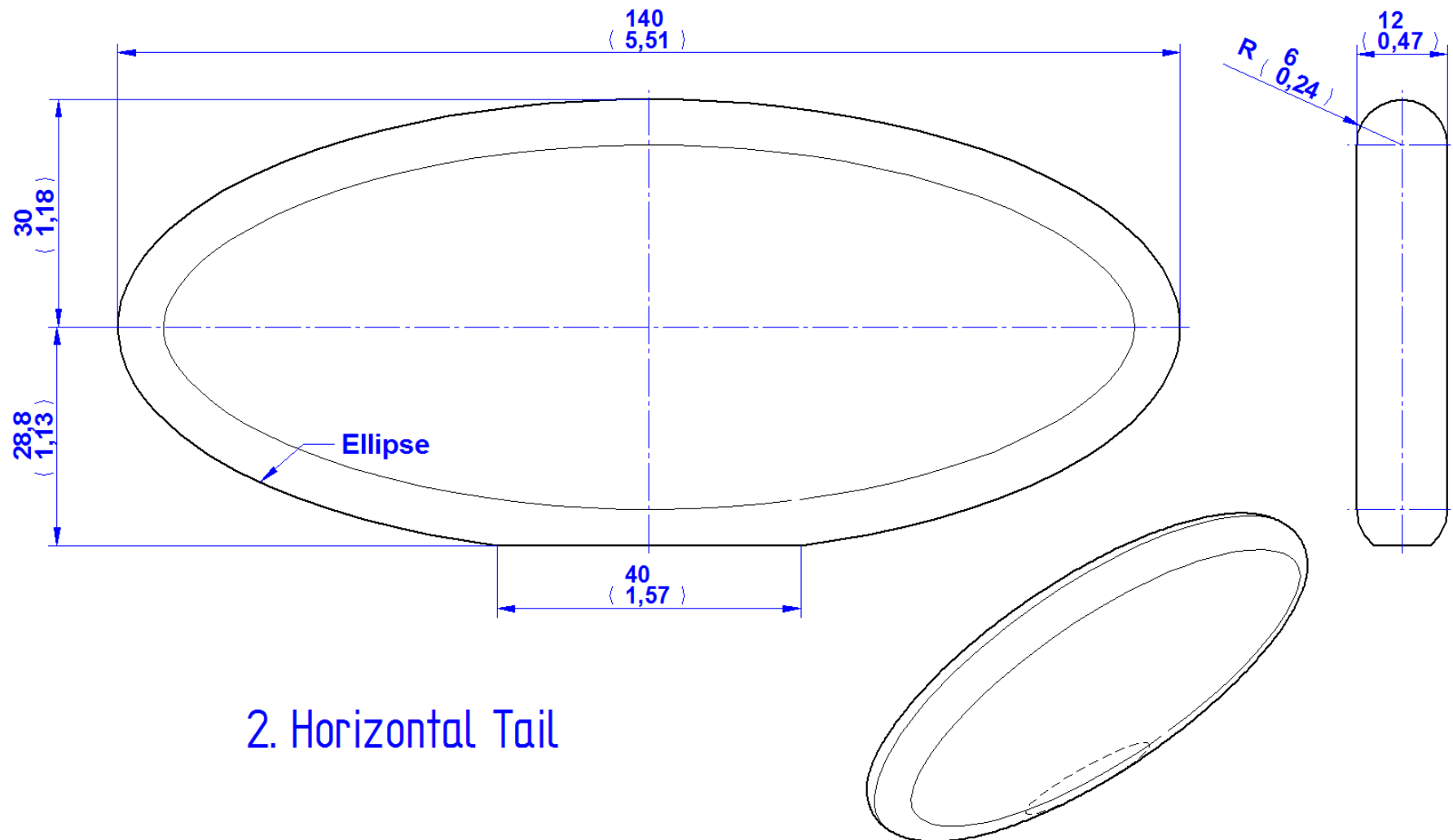


DETAIL A

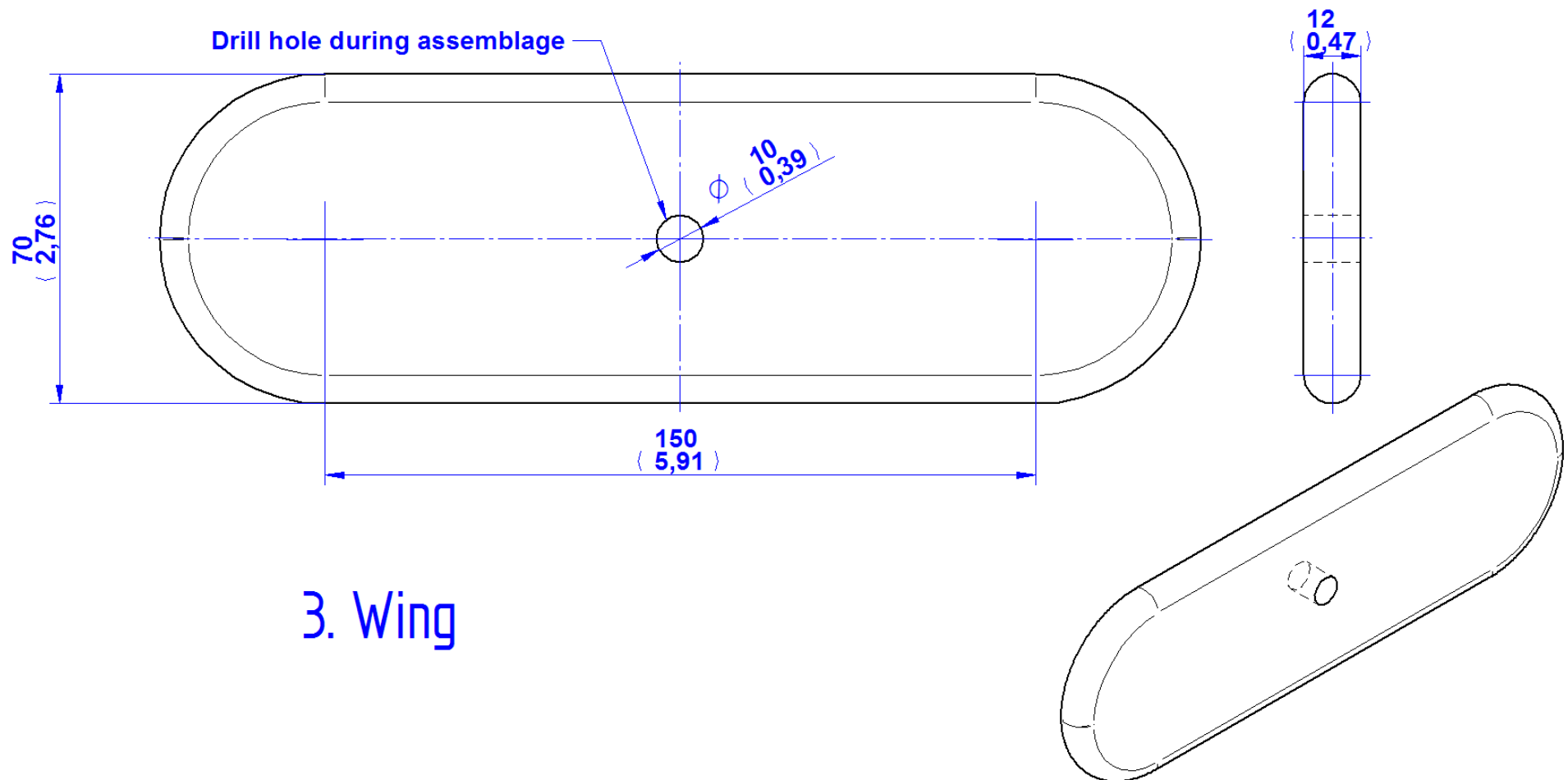


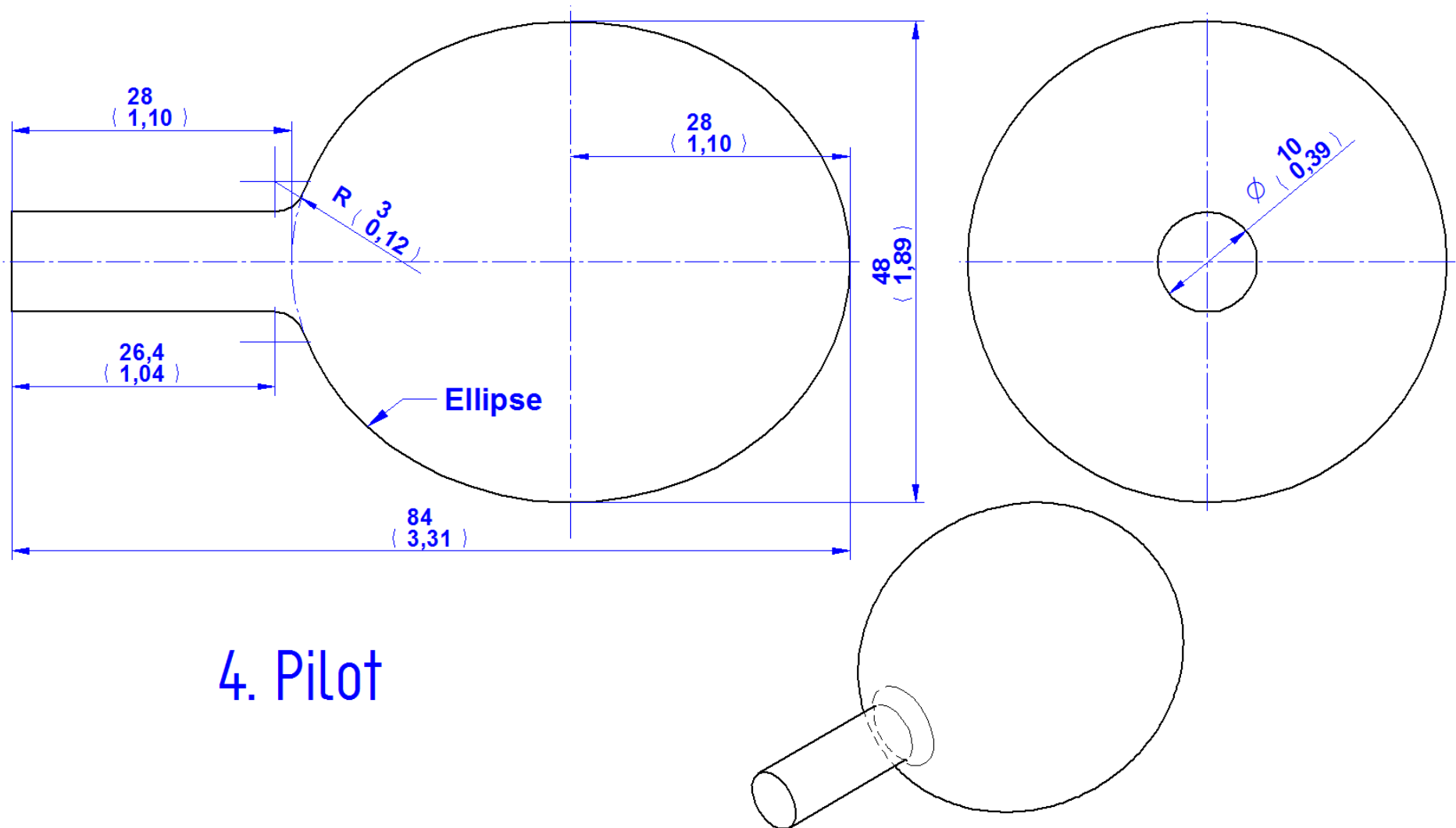


# 1. Fuselage

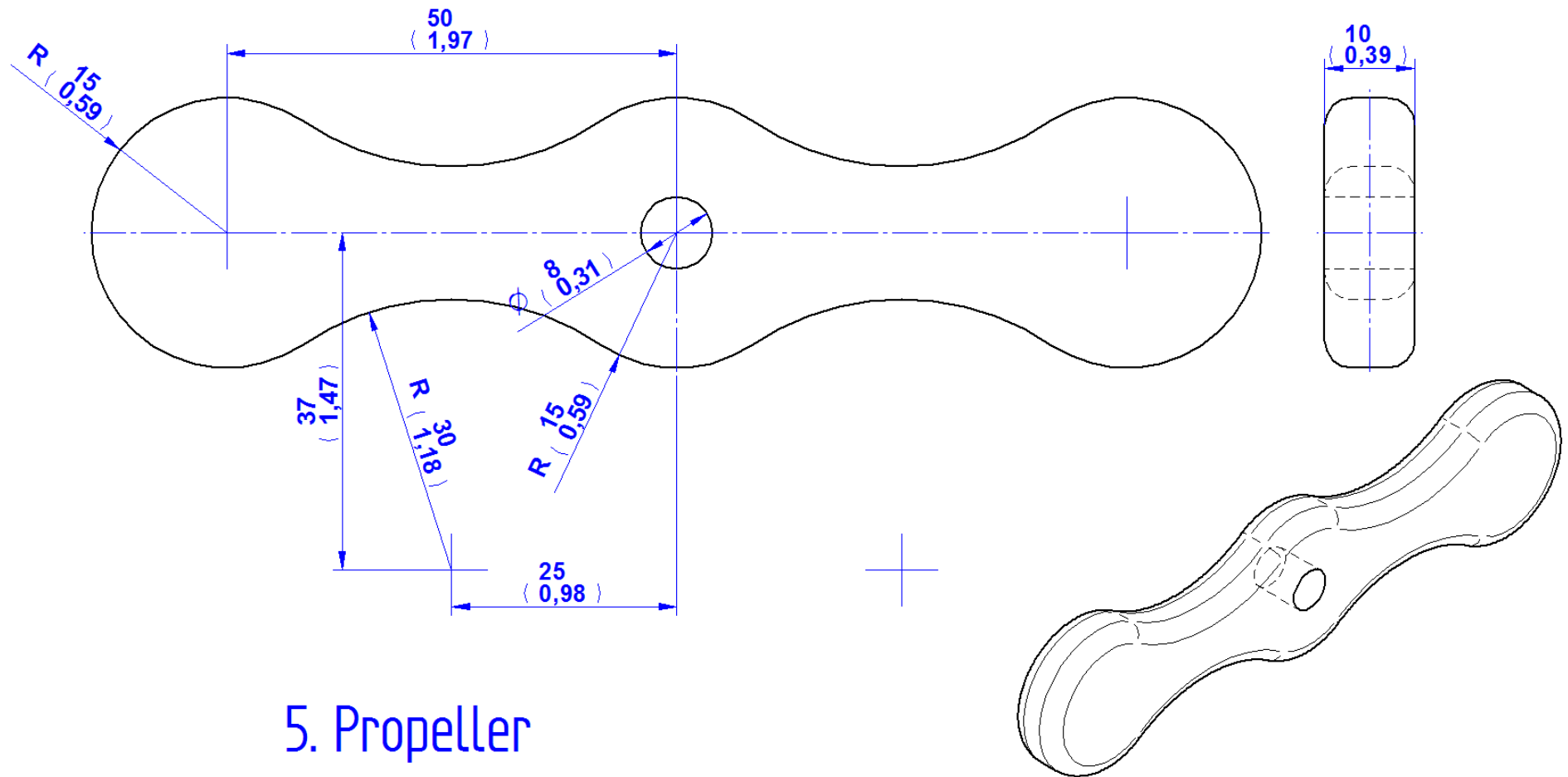


## 2. Horizontal Tail



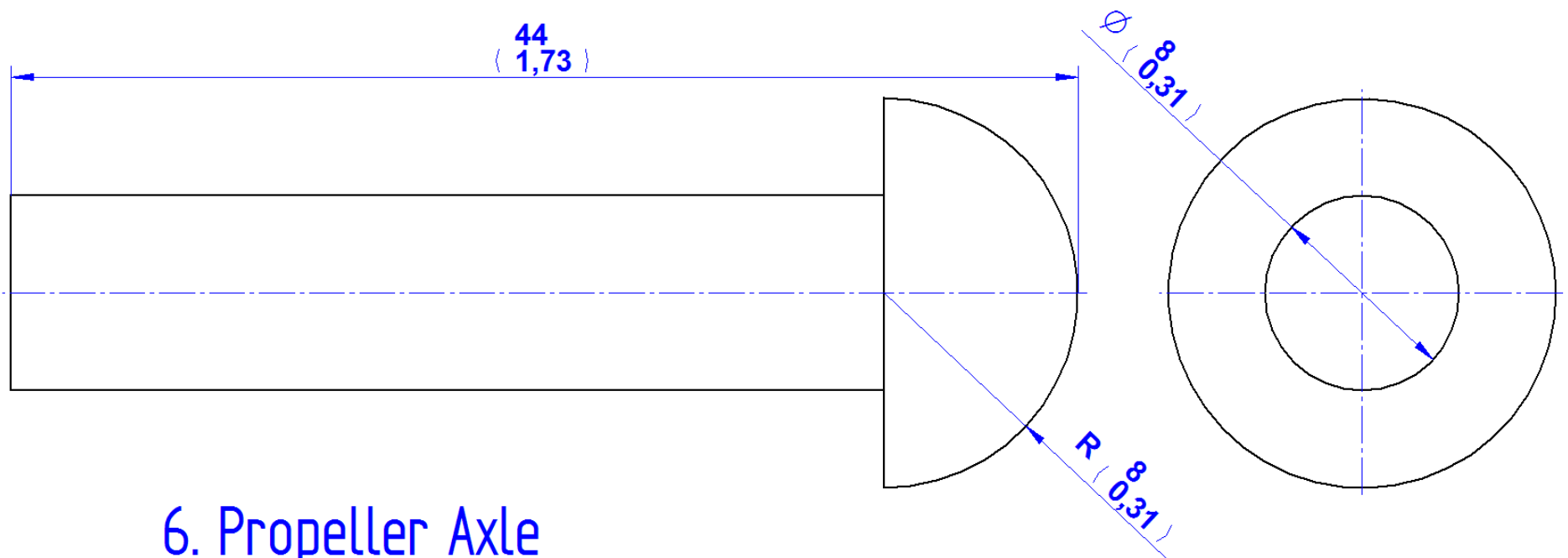


#### 4. Pilot

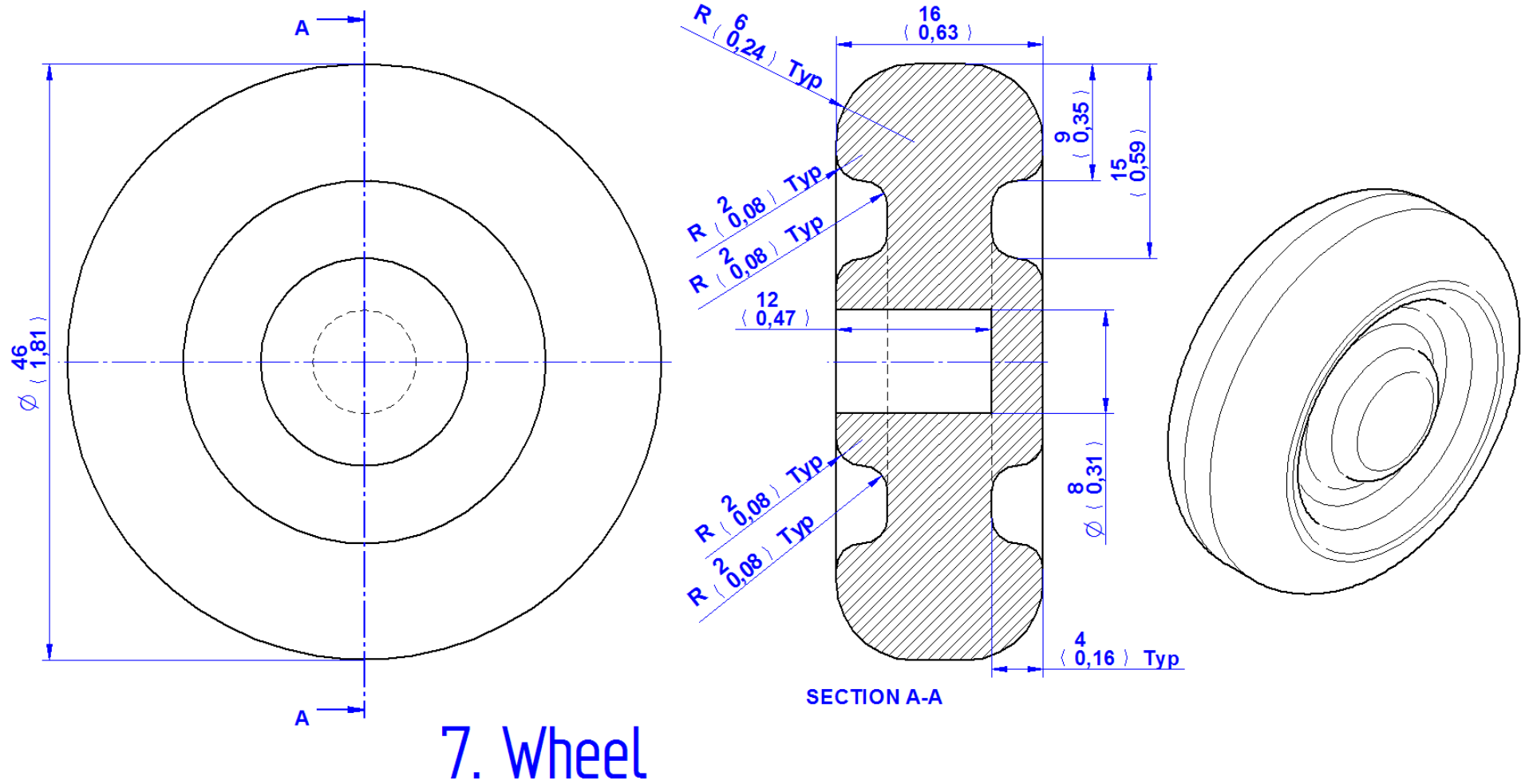


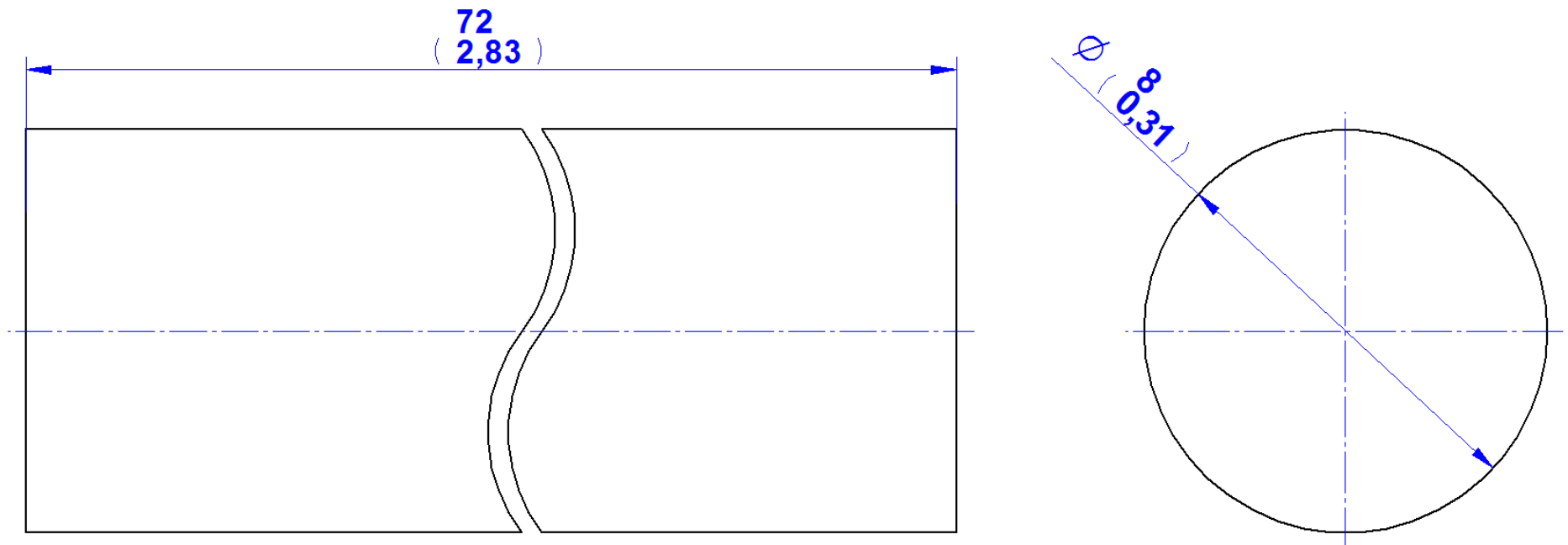
## 5. Propeller





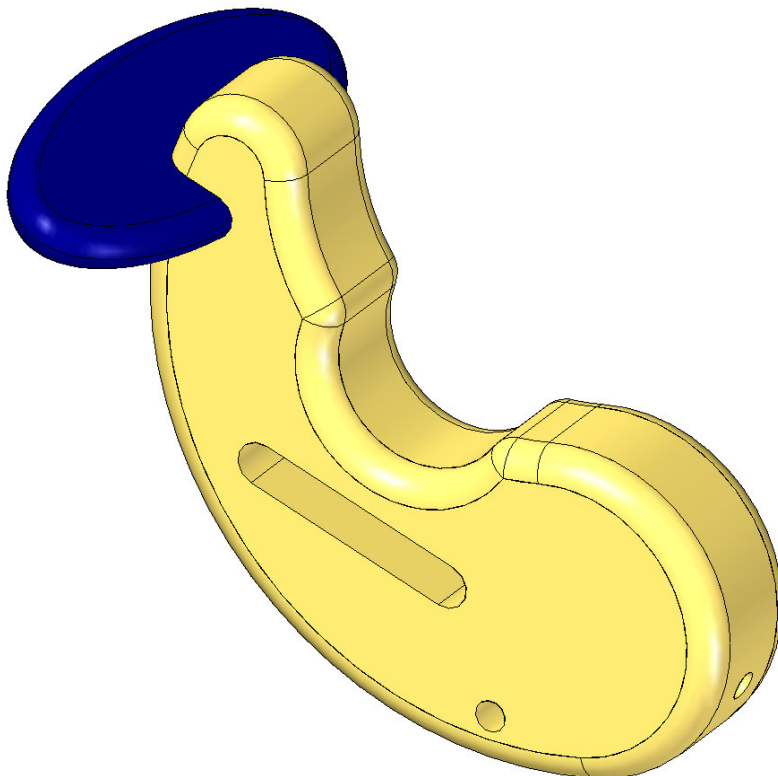
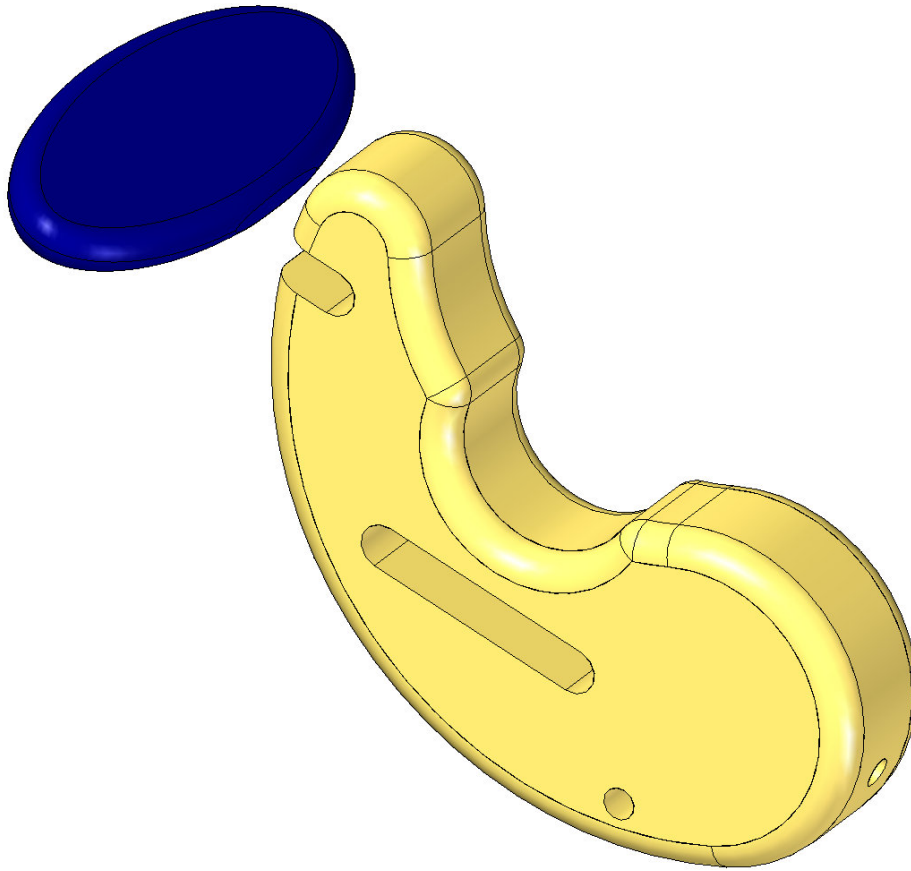
## 6. Propeller Axle



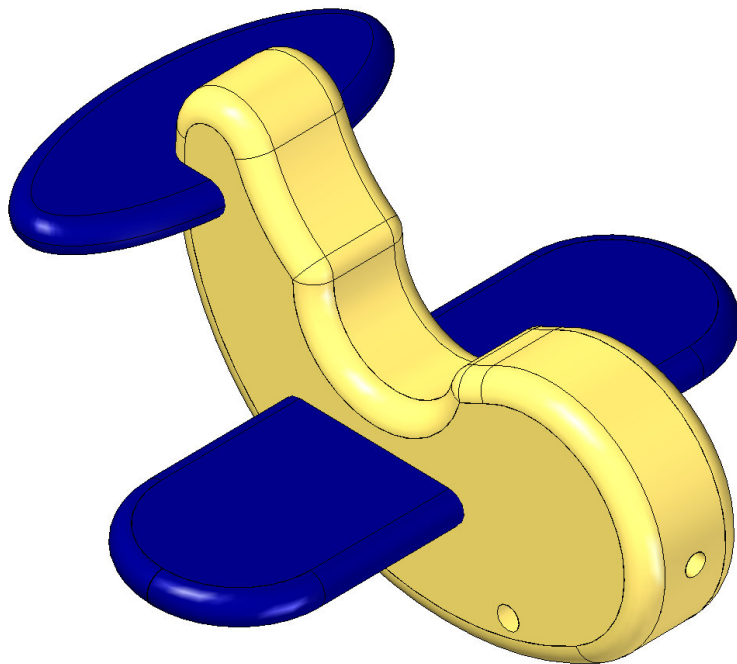
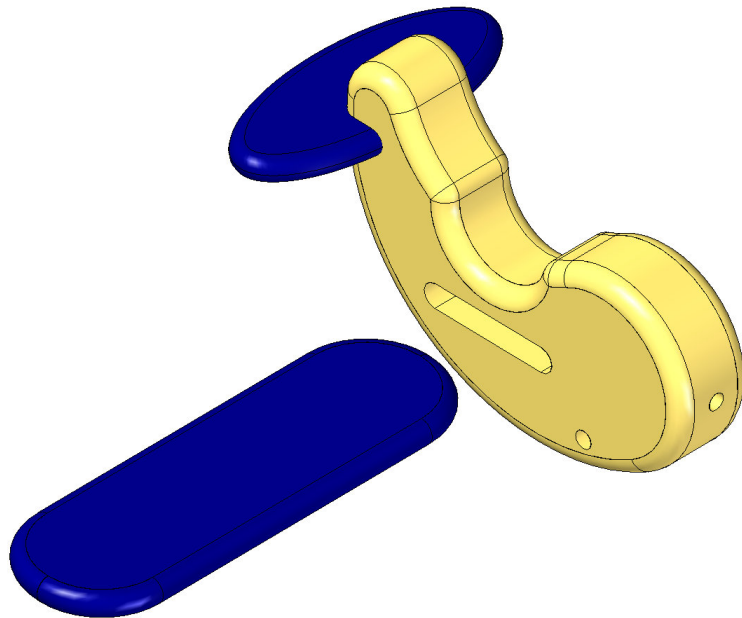


## 8. Wheel Axle

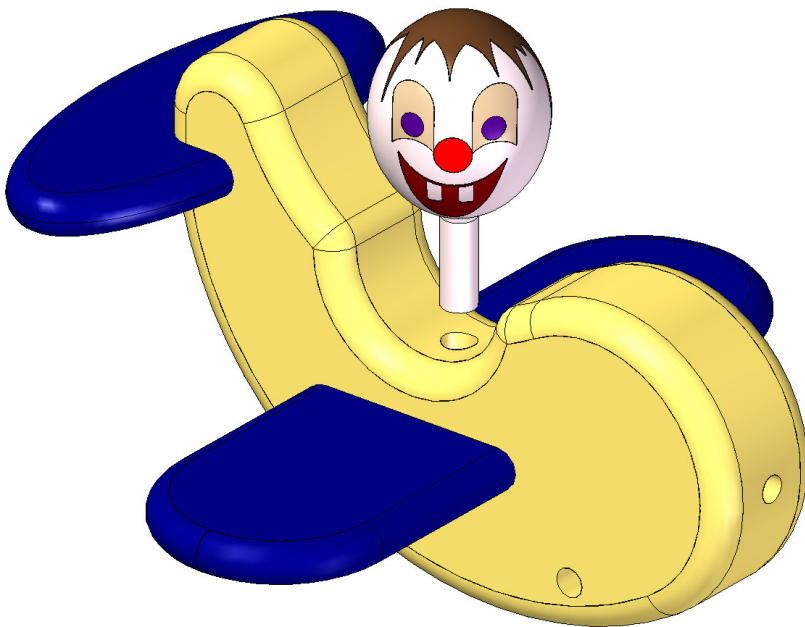
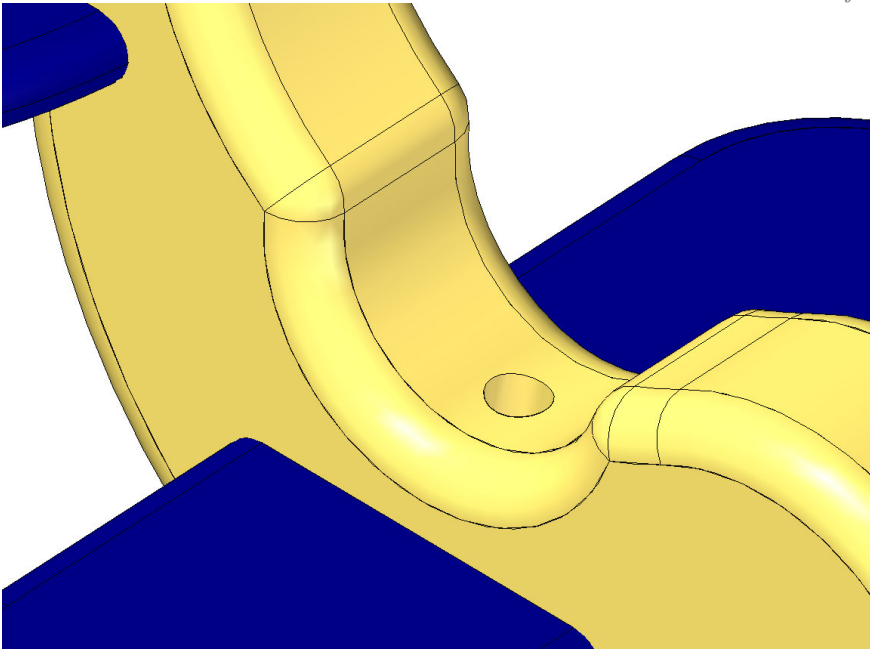
1. Attach a Horizontal Tail (item 2) onto the Fuselage (item 1) with glue.

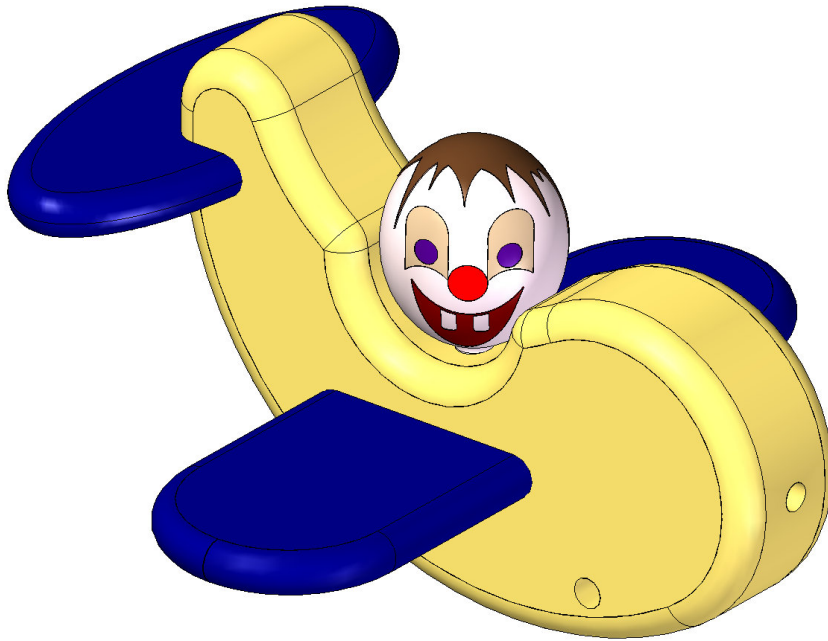


2. Attach the Wing (item 3) onto the previously made assembly.

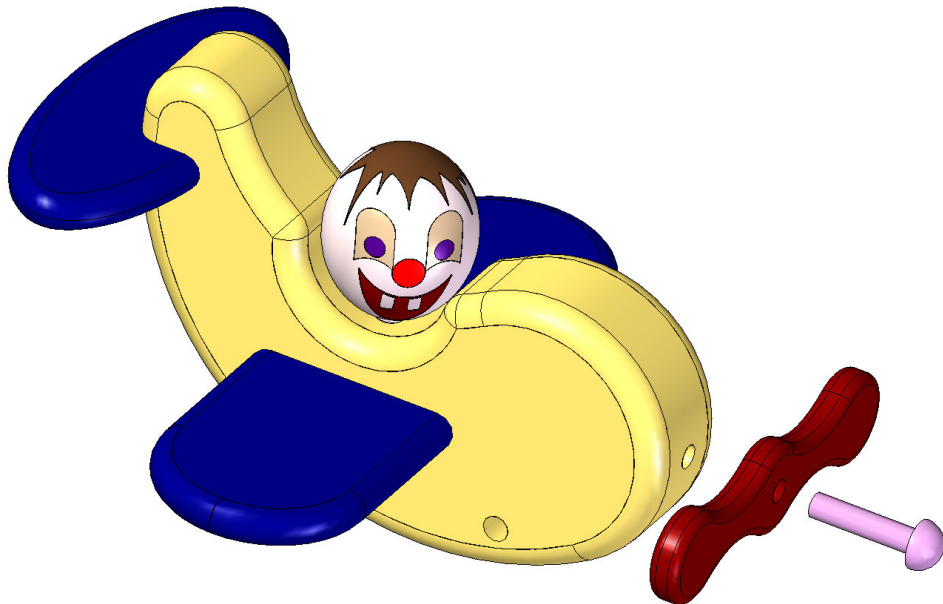


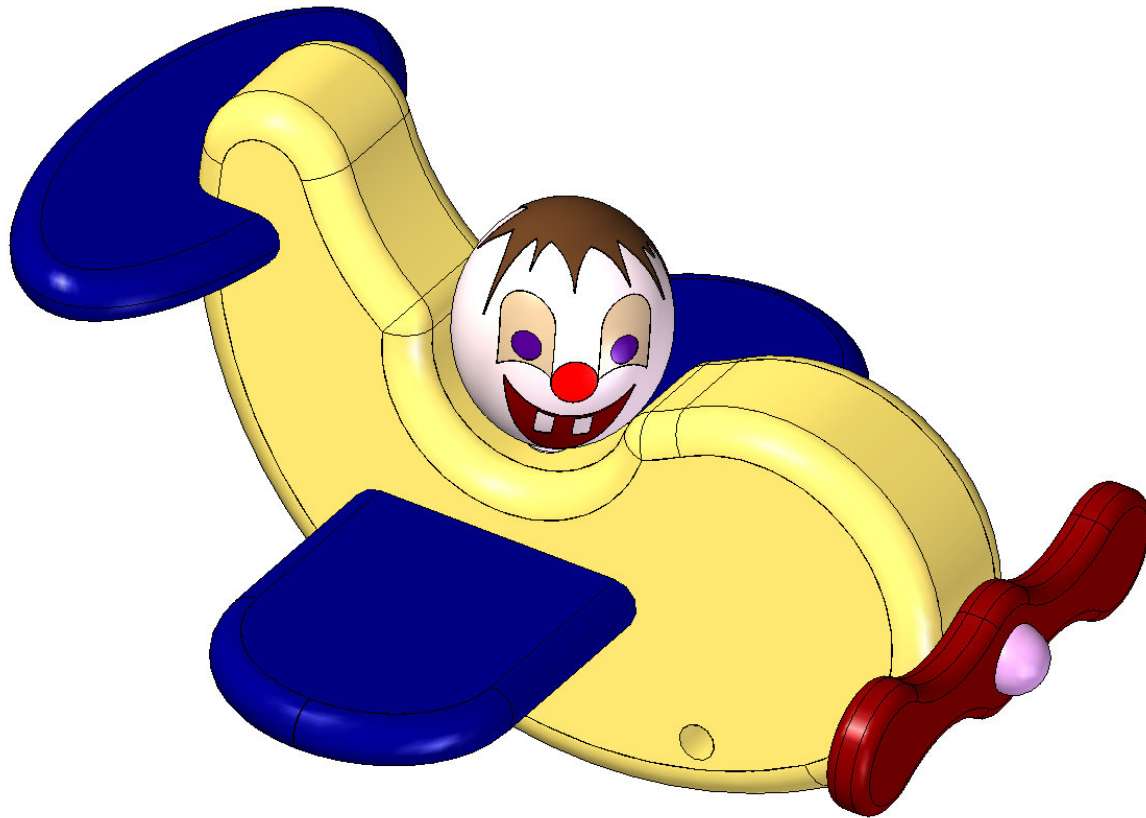
3. Drill the hole – 10mm in diameter and 26mm depth through the Wing (item 3) and Fuselage (item 1), then glue the Pilot (item 4) into in. You could draw the face lines of the Pilot before you glue it.





4. Attach the Propeller (item 5) and Propeller Axle (item 6) on the previously made assembly with glue.





5. Attach the Wheel (item 7) and the Wheel Axle (item 8) on the previously made assembly. When joining the Wheel (item 7), put a few drops of wood glue into the holes.

